



Company Profile

Point of Contact: **Marco Cremonesi**,
Partner and Operations Director

m.cremonesi@crew.it
m. +39 338 6221407
t. +39 030 221166

March 2024

Contents

Company presentation	5
CREW	6
Mission	7
Work Philosophy	8
Services	10
Financial Position	18
Our offices	20
Our Experience	25

Company presentation



CREW

CREW

CREW, CREMONESI WORKSHOP, 93% owned by FS Sistemi Urbani, is the multidisciplinary design company of the Urban Hub within the FS Group.

Founded in 1987 by Lamberto Cremonesi, CREW has expanded its presence in civil, industrial, and infrastructure sectors, becoming one of Italy's leading international architectural and structural engineering firms.

Offering integrated and comprehensive services, CREW spans transportation infrastructure, such as railway and metro stations, where it is a leader in Italy; shopping centers with a focus on space planning and user experience optimization; sports facilities ensuring optimal functionality for sporting activities and comfortable spaces for spectators; waste-to-energy plants, providing specialized expertise in design and ensuring energy efficiency optimization and sustainable waste management; urban regeneration projects aimed at improving or transforming existing urban areas to make them more sustainable, attractive, and functional.

With an in-house team of architectural and structural design experts collaborating synergistically to tackle design challenges, CREW embraces a multidisciplinary and multi-authorial approach to address complex projects with a high level of professionalism. The diversity of skills and collaboration among internal team members ensures creative problem-solving and tailored solutions to meet clients' needs.

Mission

Our mission is to commit every day to designing effective solutions to complex problems – never taken for granted, but intelligent and creative – through a multi-authorial and collaborative approach.

Every challenge we face is the result of the passion, commitment, and daily research of each member of our team.

Guided by the vision of creating a quality experience for people in the projects we conceive, we elevate the future, day after day, project after project, with the belief that every contribution, no matter how small, can make a difference. We offer services that go far beyond mere design.

Through a synergy of expertise, we plan, manage, and coordinate all aspects of the project from start to finish: from the original idea, to selecting the appropriate technology, to overseeing the work, controlling costs, managing the project and construction, to analyzing safety issues and fire prevention, all the way to final testing.



Franco Stivali
CEO



Lamberto Cremonesi
Chairman
Founder

Directors



Marco Cremonesi
COO



Claudio Turrini
Technical Director

Key figures



Sonia Piazzani
Head of Civil
Engineering and
Structures



Sara Antonelli
Head of Urban
Architecture and
Building



Paolo Martinelli
Head of
Architecture for
Mobility



Gianluca Mutti
Head of Site
Supervision and
Quantity Survey



Luca Saleri
Head of Business
Development



Federico Prevosti
Head of PMO



Veronica Andreis
Sustainability
Specialis



Luca Gandaglia
BIM Manager



Marzia Mainardi
Permitting
Manager

Work Philosophy



CREW'S work philosophy places customer value at the forefront, representing the primary objective and constant guide for activities to be carried out. This approach is reflected in every phase of the design process, from initial planning to final delivery. The CREW team is committed daily to consistently surpassing customer expectations, contributing to the achievement of their goals.

CREW's experience and expertise encompass every level of design, from architecture to engineering, ensuring integrated and cutting-edge solutions.

CREW distinguishes itself by its ability to adapt to the specific needs of each client and to work in synergy with them to develop personalized delivery strategies.

CREW is a flexible and results-oriented company, ready to meet challenges and respond to the changing needs of the market. It offers services and resources that go beyond mere design, prioritizing added value, optimization, and efficient management of the implementation process.

By practicing multi-authorship, every idea, contribution, and viewpoint is welcomed with respect, valuing what they can add to the final result. There is no dominant voice, but a harmonious chorus of talents that come together to overcome complex challenges and generate quality projects.



Services

CREW, thanks to a multidisciplinary team of about 80 members, is able to efficiently meet any type of request.

Through a synergy of skills, it plans, manages, and coordinates all aspects of the project from start to finish: from the original idea, to selecting the most appropriate technology, to overseeing the work, costs, project and construction management, safety analysis, and fire prevention, all the way to final testing.

We can provide an integrated architectural and engineering design service or focus any of our specialists to refine every single detail of the building.

Our work ranges from subway stations to railway stations, from shopping centers to sports facilities, from waste-to-energy plants to master plans.

We work across all sectors, enabling technologically advanced design that is appropriate, economical, and sensitive to environmental and human needs. We manage the entire design process and interface with internal teams, clients, and stakeholders through a Project Control Team (PCT).

Our Project Control Team (PCT) here in Brescia ensures quality and adherence to company policies in our projects. It acts as a control point to ensure that results and

communications to external partners are of high quality, under the supervision of the Project Manager. In recent years, we have accumulated extensive experience in developing and delivering projects using the BIM model in various sectors.

This model allows us to work from the initial idea to the construction phase, producing detailed information along the way. We primarily use software such as REVIT and AutoCAD for our basic projects, but we are also able to adapt to other platforms such as Rhinoceros, Grasshopper, ArchiCAD, and SketchUp.

During the design process, our team of engineers and architects uses REVIT to share and coordinate the design, ensuring that we are able to manage and respond to changes efficiently.

Additionally, we use specialized software to obtain cost estimates and identify different construction phases. We are able to work at all levels of detail, from LOD100 to LOD500, to meet the specific needs of our projects.

URBAN ARCHITECTURE AND BUILDING

ARCHITECTURE FOR MOBILITY

STRUCTURE AND CIVIL

SITE SUPERVISION AND QUANTITY SURVEY

MEP

Sustainability

Innovation

Permitting

BIM and Digital

Masterplan

Edifici

Stazioni

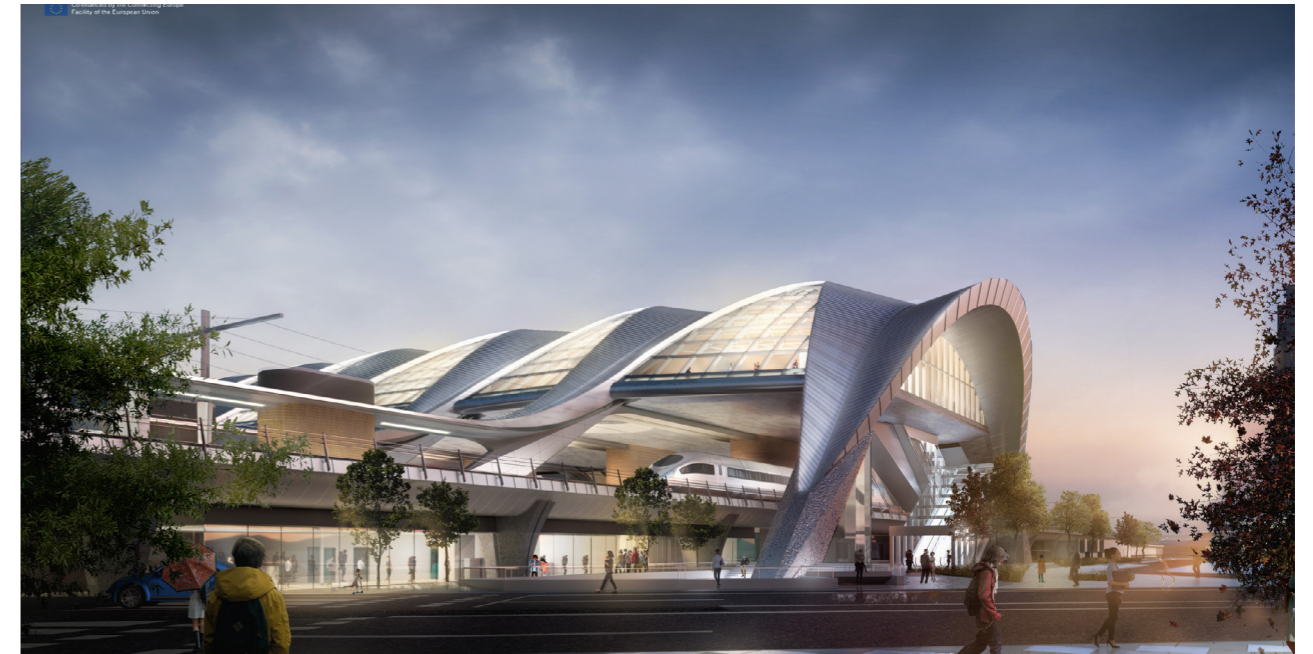
Edifici industriali e
Termovalorizzatori

Strutture sportive

1. Urban Architecture and Building

A highly collaborative and multidisciplinary team designs spaces of lasting beauty and functionality, always seeking relationships with the surrounding urban and non-urban environments. Working closely with our structural and MEP engineers, together committed to integrated design, we specialize in technically-demanding projects of significant scale, including industrial, commercial, office buildings, metro stations, masterplans, and projects of various scales such as interior design. We collaborate extensively with other international architecture firms, providing our multidisciplinary and technical knowledge. CREW delivers a full service, from preliminary concept to detailed building design.

- | | |
|----------------------|----------------------|
| Architectural Design | Permitting |
| Interior Design | Local architect |
| Landscape Design | Project coordination |
| Masterplanning | Cost Consultancy |
| Site Supervision | |



2. Architecture for mobility

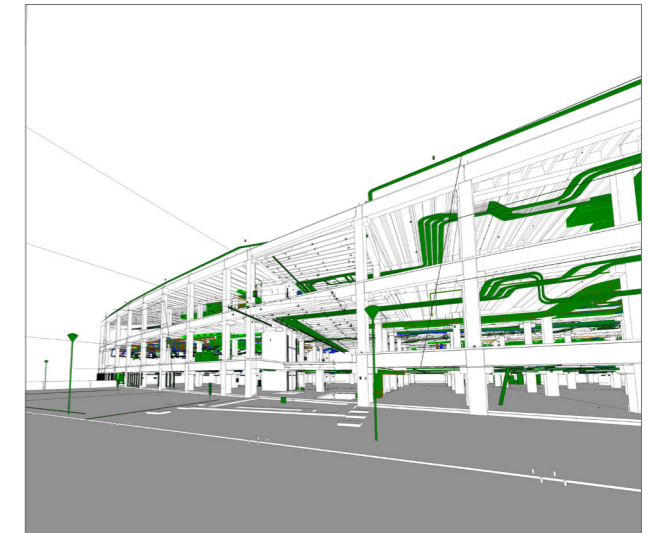
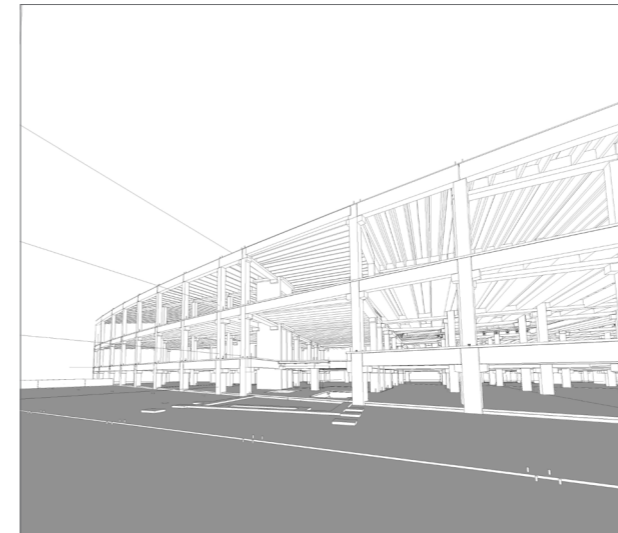
We are the leading company in Italy in the design of subway stations with a high degree of specialization in designing environments dedicated to mobility. From the design of railway and subway stations, to cycle and pedestrian infrastructures, to parking facilities, and to the regeneration of urban spaces related to them, we are committed to creating spaces that promote efficient, safe, and sustainable mobility. We integrate cutting-edge technologies and sustainable approaches to enhance the user experience in the complex world of mobility, contributing to a smart and connected urban future.

- | | |
|----------------------|----------------------|
| Architectural Design | Permitting |
| Interior Design | Local architect |
| Landscape Design | Project coordination |
| Masterplanning | Cost Consultancy |
| Site Supervision | |

1. Structure and Civil

Structural Engineering is a historical department of CREW. We believe that the best engineering solutions result from a close collaboration with our clients and our multi-disciplinary approach to design. We rethink structures to make them more responsive to evolving demands and to obtain the most efficient solutions, resulting in least materials, and least cost. This engineering department is equipped with the most sophisticated structural calculation systems, both static and dynamic, linear and non-linear. We pay a special attention to the training process of our structural engineer so that they can innovate in response to real-world challenges and constraints.

- Civil Engineering
- Structural modeling and analysis
- Structural dynamics and seismic
- Construction management
- Site Construction Supervision



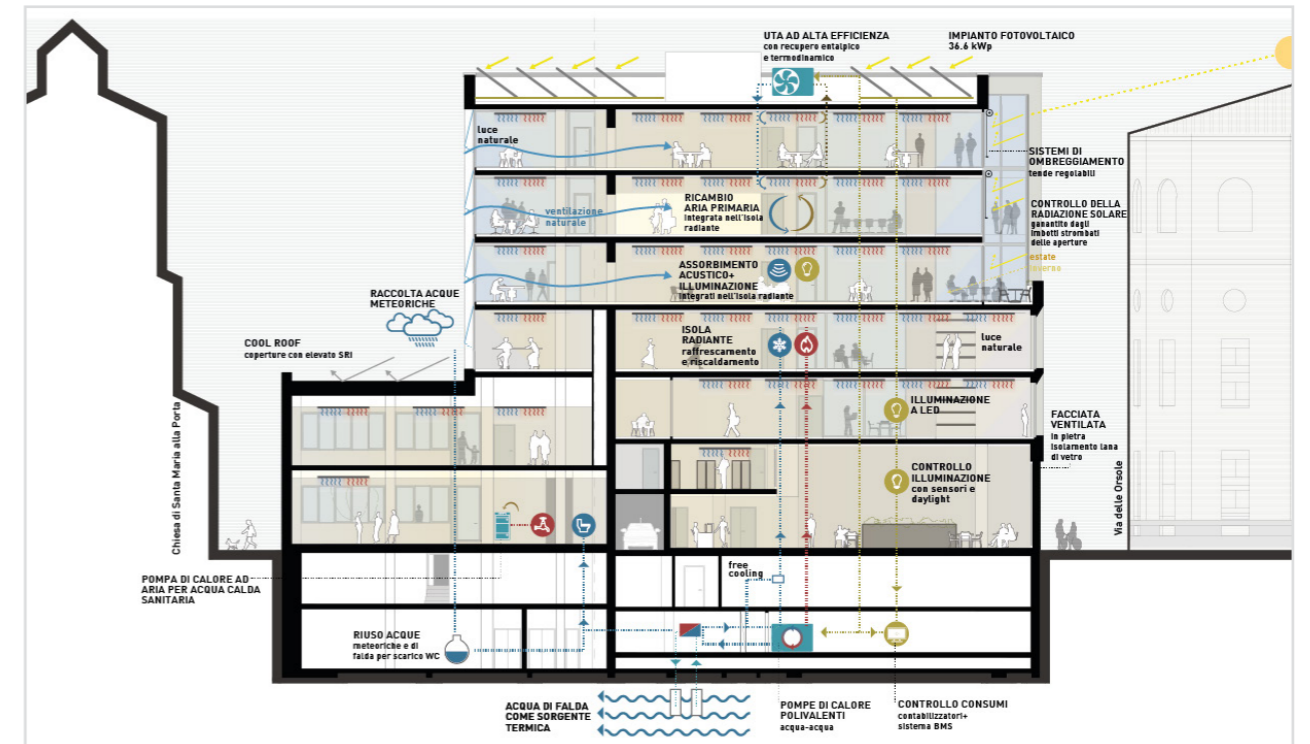
4. BIM (Building Information Modeling)

We build on CREW's integrated working history to shape BIM as a positive collaborative method. At its best, this method allows information to flow freely – between architects, engineers, technical specialists, operators – to promote productive, open working relationships. Using modeling for more joined-up working is helping our teams to reduce design conflicts, to produce more efficient designs, to optimize layouts, to detach the clash between structure, architecture and MEP and to achieve greater efficiency. We are able to develop all the Level of Detailed from LOD100 to LOD500 according to the specific needs.

- | | |
|-----------------------------------|---------------------|
| Structural design | Design Optimisation |
| Architectural design | BIM Management |
| MEP design | Interoperability |
| Computational & Generative Design | 3D coordination |
| | Cost estimation |

5.MEP

Coordination of the structures with mechanical and electrical systems provides a major challenge for complex building and industrial projects. CREW, thanks to its technical staff of MEP system experts strictly collaborate with designers and consultants in a perfectly integrated way with the project design from the first development phases. This approach leads to a unique and coherent unit, with no interference between the structure and the networks. Besides functionality itself, we place a particular emphasis on energetic optimization, system-wide compatibility, maintenance requirements and reliability. We successfully delivered several projects with BREEAM 'Excellent' or LEED 'Gold' certification. Today, more than ever, respect for the environment and the constant search for ways to exploit renewable energy sources are fundamental.



6.Sustainability

CREW strongly believes in sustainability, considered as part of the company vision and as a fundamental holistic approach that is necessary to implement for embracing the environmental, economic and social aspects of the constructions. Through the adoption of a sustainable "design vademecum", Crew integrates in all the projects the standards coming from the different Sustainability Protocols, as well as current Italian and European legislation, embracing sustainability from the early design stages throughout the projects development and up to the construction stage.;

- Minimum Environmental Criteria
- Sustainability protocols
- EU taxonomy & DNSH
- Photovoltaics and Daylight Analysis
- Life Cycle Assessment of buildings

Financials

CREW has maintained economic and financial stability, consolidating its position in the market with a turnover exceeding 16 million euros in 2023.

Despite the difficult economic and financial context of the Euro area, in the last years CREW has increased its own turnover and plans to continue to grow in the coming years. In addition to the positive financial position, CREW adds a financial management closely monitored, which allowed, over the years, to meet the financial commitments operating independently. This careful financial management has made and makes it possible to reduce the exposure and credit risk. The management associated with the wide availability of credit lines granted by the Italian banking system makes CREW a subject, compared to its size, with a balanced and creditworthy financial capacity, in support of new projects acquired and in the course of acquisition in the field of infrastructure. In December 2018, 93% of CREW's share capital was acquired by Italferr, a company within the FS Italiane Group. As of January 2024, Urban Systems has taken over from Italferr, and CREW has become an integral part of the Urban Pole of the FS Group. The group has a turnover of 15 Billions USD in 2023, ensuring CREW an improved financial stability.

Quality assurance, environmental management and health & safety policies

Since its inception, CREW has been fully committed to ensuring high standards of quality, workplace safety, and environmental sustainability, in line with the best international practices. Since 2002, we have maintained ISO 9001:2015 certification for our Quality Management System, periodically confirmed by independent third parties. In 2023, we added ISO 14001:2015 certification for our Environmental Management System to our list of achievements, obtained through an equally rigorous certification process.

These certifications are not just symbols of our commitment to excellence; they also testify to our dedication to reducing the environmental impact of our activities and promoting sustainability in all our operations.

CERTIFICATO N. 8051/02/S
CERTIFICATE No.

SI CERTIFICA CHE IL SISTEMA DI GESTIONE PER LA QUALITÀ DI
 IT IS HEREBY CERTIFIED THAT THE QUALITY MANAGEMENT SYSTEM OF

CREMONESI WORKSHOP S.R.L.

VIA CEFALONIA, 70 25124 Brescia (BS) ITALIA
 NELLE SEGUENTI UNITÀ OPERATIVE / IN THE FOLLOWING OPERATIONAL UNITS

VIA CEFALONIA, 70 25124 Brescia (BS) ITALIA E CANTIERI OPERATIVI

È CONFORME ALLA NORMA / IS IN COMPLIANCE WITH THE STANDARD
ISO 9001:2015

PER I SEGUENTI CAMPI DI ATTIVITÀ / FOR THE FOLLOWING FIELD(S) OF ACTIVITIES

PROGETTAZIONE, DIREZIONE LAVORI E COORDINAMENTO DELLA SICUREZZA NEI SETTORI DELL'ARCHITETTURA, DELL'INGEGNERIA E DELLE INFRASTRUTTURE. VERIFICHE SULLA PROGETTAZIONE DELLE OPERE AI FINI DELLA VALIDAZIONE/ APPROVAZIONE

DESIGN, SUPERVISION OF CONSTRUCTION AND SAFETY COORDINATION SERVICES IN THE FIELDS OF ARCHITECTURE, ENGINEERING AND INFRASTRUCTURE. DESIGN VERIFICATION FOR VALIDATION/ APPROVAL PURPOSES

La validità del presente certificato è subordinata a sorveglianza periodica annuale / renewable only at complete review, every three years, of the management system.
 The use and the validity of this certificate are subject to compliance with the RINA Regulation for the Certification of Quality Management Systems.
 The use and validity of this certificate are subject to compliance with the RINA document: Rules for the Certification of Quality Management Systems.

Prima emissione / First Issue	27.12.2002	Data decisione di rinnovo / Renewal decision date	12.12.2023
Data scadenza / Expiry Date	15.12.2026	Data revisione / Revision date	12.12.2023

Jacopo Ferrando
 Genoa & Milan Management System Certification, Head

ACCREDITIA
 SQQ N° 002 A
 RINA Services S.p.A.
 Via Corsica 12 - 16128 Genova Italy

CISQ
 CISQ è la Federazione Italiana di Organismi di Certificazione del sistema di gestione aziendale
 CISQ is the Italian Federation of management system Certification Bodies

CERTIFICATO N. EMS-9460/S
CERTIFICATE No.

SI CERTIFICA CHE IL SISTEMA DI GESTIONE AMBIENTALE DI
 IT IS HEREBY CERTIFIED THAT THE ENVIRONMENTAL MANAGEMENT SYSTEM OF

CREMONESI WORKSHOP S.R.L.

VIA CEFALONIA, 70 25124 Brescia (BS) ITALIA
 NELLE SEGUENTI UNITÀ OPERATIVE / IN THE FOLLOWING OPERATIONAL UNITS

VIA CEFALONIA, 70 25124 Brescia (BS) ITALIA

È CONFORME ALLA NORMA / IS IN COMPLIANCE WITH THE STANDARD
ISO 14001:2015

E AL REGOLAMENTO TECNICO ACCREDIA RT-09, APPLICABILE IN ITALIA
 PER I SEGUENTI CAMPI DI ATTIVITÀ / FOR THE FOLLOWING FIELD(S) OF ACTIVITIES

PROGETTAZIONE, DIREZIONE LAVORI E COORDINAMENTO DELLA SICUREZZA NEI SETTORI DELL'ARCHITETTURA, DELL'INGEGNERIA E DELLE INFRASTRUTTURE. VERIFICHE SULLA PROGETTAZIONE DELLE OPERE AI FINI DELLA VALIDAZIONE/ APPROVAZIONE

DESIGN, SUPERVISION OF CONSTRUCTION AND SAFETY COORDINATION SERVICES IN THE FIELDS OF ARCHITECTURE, ENGINEERING AND INFRASTRUCTURE. DESIGN VERIFICATION FOR VALIDATION/ APPROVAL PURPOSES

La validità del presente certificato è subordinata a sorveglianza periodica annuale / renewable only at complete review, every three years, of the management system.
 The use and the validity of this certificate are subject to compliance with the RINA Regulation for the Certification of Environmental Management Systems.
 The use and validity of this certificate are subject to compliance with the RINA document: Rules for the Certification of Environmental Management Systems.

Prima emissione / First Issue	11.05.2023	Data decisione di rinnovo / Renewal decision date	11.05.2023
Data scadenza / Expiry Date	10.05.2026	Data revisione / Revision date	11.05.2023

Jacopo Ferrando
 Genoa & Milan Management System Certification, Head

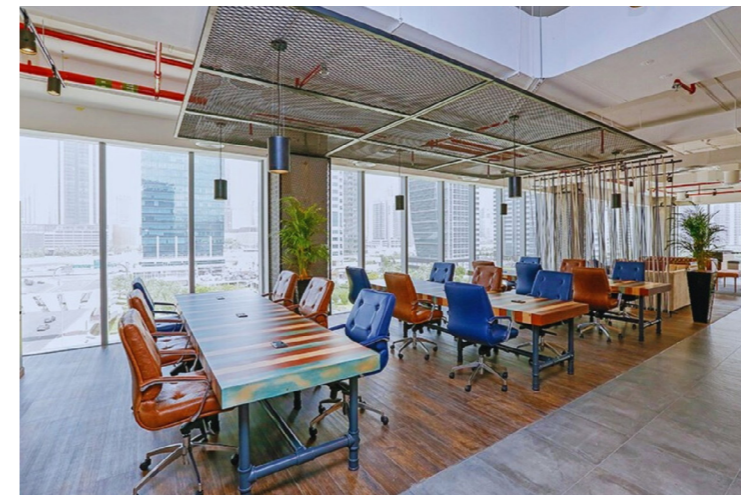
ACCREDITIA
 SCA N° 002 D
 RINA Services S.p.A.
 Via Corsica 12 - 16128 Genova Italy

CISQ
 CISQ è la Federazione Italiana di Organismi di Certificazione del sistema di gestione aziendale
 CISQ is the Italian Federation of management system Certification Bodies

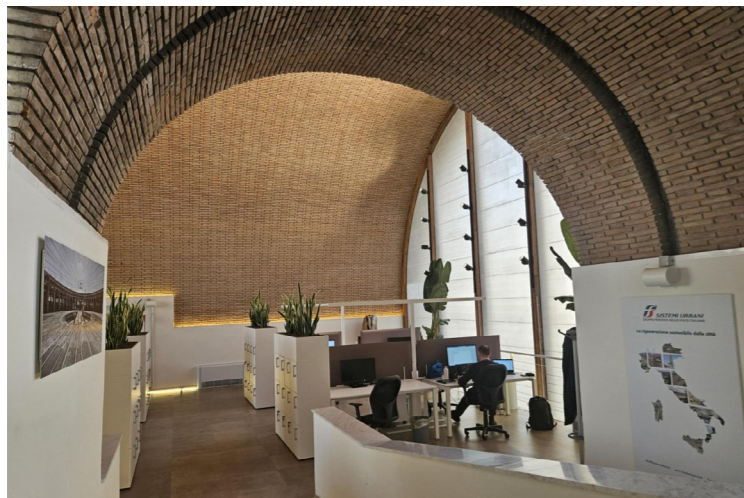
Our offices



CREW Headquarter
is located inside Crystal Palace,
Via Cefalonia 70, Brescia - Italy



CREW DMCC Office
is located in the JLT Tower, Jumeirah Lakes
Towers, Dubai - U.A.E.



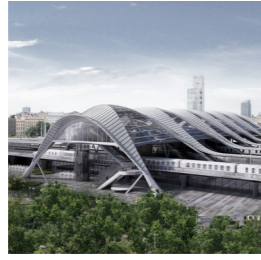
CREW Rome Offices

Our offices in Rome are located within the Urban Pole of the Gruppo FS Italiane, directly within the Termini Station in Rome.

Our Experience

Main projects

Station Projects



RIGA Central Station
Riga, Latvia
2019- Ongoing



Downtown Station
Riyadh, Saudi Arabia
2013-Under Construction



Western Station
Riyadh, Saudi Arabia
2013-Under Construction



HIA Metro Station
Doha, Qatar
2016-2019



Metro Riyadh Functional Design
Riyadh, Saudi Arabia
2013-Under Construction



Metrobus Brescia
Brescia, Italy
2001-2013



M4 Metro Line
Milan, Italy
2010-Under Construction



Metro C Piazza Venezia
Rome, Italy
2020-Under Construction



Milano MIND Merlata Station
Milan, Italy
2022- Ongoing



Elnos Shopping Centre
Roncadelle, Brescia, Italy
2014-2016



Westfield Milan
Segrate, Milan
2017-Under Construction



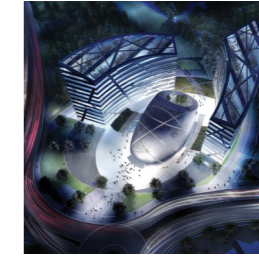
Esselunga
Mantova, Milan
2017-2018

Our Experience

Our Experience



EB Headquarter
Brescia, Italy
2005



Sannazzaro Area
Brescia, Italy
2005



CAP Holding Headquarter
Milan, Italy
2016



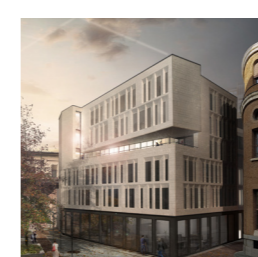
Gefran Headquarter
Provaglio d'Isèo, Italy
2008-2010



A2A S.p.A - New Office Building
Brescia, Italy
2017



Ex-Cesalpina Urban Regeneration
Bergamo, Italy
2010



Via delle Orsole n.4
Milan, Italy
2018



San Pellegrino Flagship
San Pellegrino Italy
2017-In progress



Ferservizi New Office
Rome, Italy
2020



Torri EUR
Rome, Italy
2023



Napoli Porta Est Masterplan
Naples, Italy
2022-Ongoing



Trento Vision Masterplan
Trento, Italy
2022-Ongoing

Real Estate



Roma Tuscolana
Rome, Italy
2022



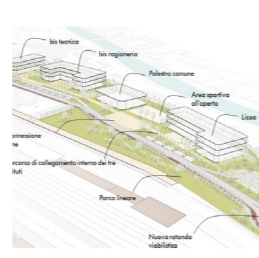
Campi Flegrei
Naples, Italy
2022



Licata
Licata, Agrigento, Italy
2021



Catanzaro-Sala
Catanzaro, Italy
2024



Luino
Luino, Varese, Italy
2020



Voghera
Voghera, Pavia, Italy
2024



Roma Trastevere
Rome, Italy
2022



Porta Susa
Turin, Italy
2022



Modena Freight Yard
Modena, Italy
2022



Casal Rotondo
Casal Rotondo, Rome, Italy
2022

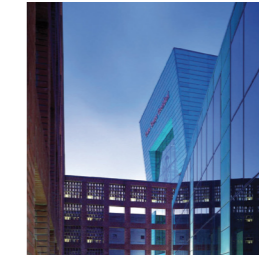


Capalbio Scalo
Capalbio, Grosseto, Italy
2022

Industrial Building and WTE



Salvatore Ferragamo Logistic Centre
Firenze, Italy
2013-2018



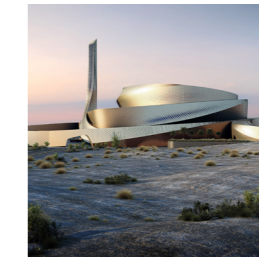
Newspaper Printing Plant
Erbusco, Brescia, Italy
1998-2001



WTE Plant for Solid Urban Waste
Brescia, Italy
1996-2006



WTE Plant Extension
Brescia, Italy
2018-Under Construction



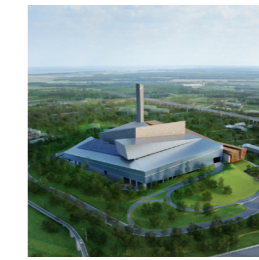
WTE Plant for Solid Urban Waste
Dubai, UAE
2016-In progress



WTE Plant for Solid Urban Waste
Dubai, UAE
2017-2023



WTE Plant for Solid Urban Waste
Parona, Italy
2019-2023



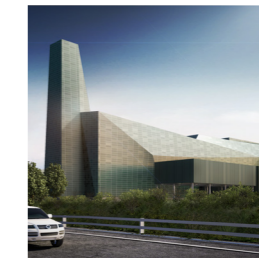
WTE Plant for Solid Urban Waste
Naples, Italy
2011



WTE Plant for Solid Urban Waste
Cavaglià, Italy
2021



WTE Plant for Solid Urban Waste
Aprilia, Italy
2021



WTE Plant for Solid Urban Waste
Gualdo Tadino, Italy
2022



WTE Plant for Solid Urban Waste
Cavaglià, Italy
2021



Combined Cycle Power Plant
San Severo, Foggia, Italy
2008-2010



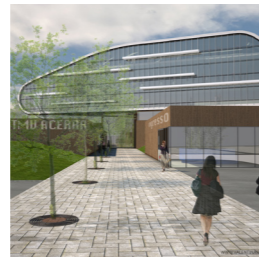
Combined Cycle Power Plant
Bayet, France
2008-2010



Combined Cycle Power Plant
Rizziconi, Italy
2006



Combined Cycle Power Plant
Sparanise, Italy
2005



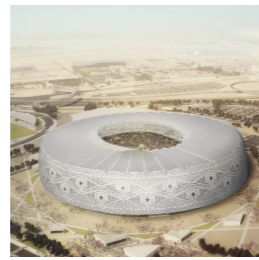
WTE Plant for Solid Urban Waste
Acerra, Naples, Italy
2010



WTE Plant for Solid Urban Waste
Tarquinia, Italy
2010



Al Bayt Stadium
Doha, Qatar
2015-Under Construction



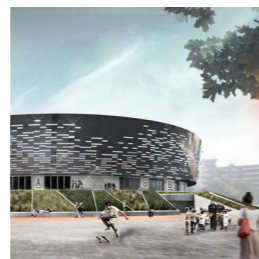
Fifth Precint Stadium
Doha, Qatar
2016



Red Star Stadium
Belgrade, Serbia
2018



New M.Rigamonti Stadium
Brescia, Italy
2017



EIB Sport Hall
Brescia, Italy
2014



IPIC Arena
Abu Dhabi, UAE
2018

Parking and Road



Park B1 Marco Polo Airport
Venezia, Italy
2017-In progress



Sant'Eufemia Parking
Brescia, Italy
2014-2016



Bus depot ATM Triboniano
Milan, Italy
2022-Ongoing



Bus depot ATM Toscana
Milan, Italy
2022-Ongoing



Multy-storey Underground Parking
Brescia, Italy
2007



BreBeMi Motorway
Brescia, Bergamo, Milan, Italy
2007-2014



TEEM
Milan, Italy
2011



Brescia Ovest
Brescia, Italy
2013

Sport Facilities

CREW

P.IVA e C.F 02940160175
Via Cefalonia 70 - 25124
Brescia - ITALY
Tel +39 030221166
Fax +39 030220711

info@crew.it

Polo Urbano of
Gruppo FS Italiane
Rome - Termini Station
Via Marsala 41 - 00185
Rome - ITALY

CREW - Middle East DMCC

Dubai-One Business Center JLT
Jumeirah Lake Towers
Dubai - U.A.E
Tel +971.4.4390443
Fax +971.4.4390442

www.crew.it